



HIERARCHY OF CONTROL MEASURES

Most Effective



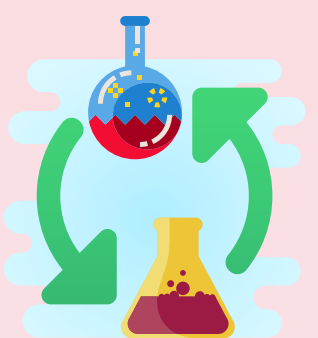
The employer shall control chemicals hazardous to health through the following control measures :



Elimination

Physically remove the hazard.

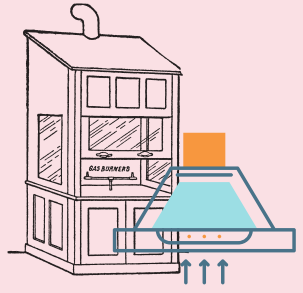
- Example : Replacing paints containing lead with those containing non-lead pigments.



Substitution

Replace the hazard, from a very hazardous chemical with a less hazardous one.

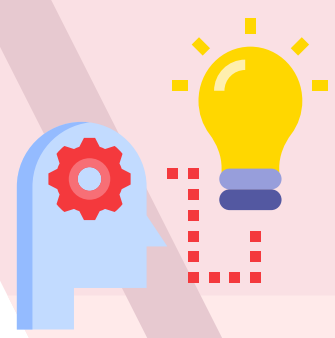
- Example : Replacing solvent benzene to toluene.



Engineering Control

Implement physical change to the workplace, which eliminates/reduce the hazard on the job/task.

- Change process to minimize contact with hazardous chemicals.
- Isolate or enclose the process.
- Use fume hoods.



Administrative Control

Establish efficient processes or procedures. Change the way people work.

- Rotate job assignments.
- Adjust work schedule/duration of work.



PPE

Protection through PPE.

- Use chemical protective clothing.
- Wear respiratory protection.
- Wear glove and goggles.

Less Effective



UTM

UNIVERSITI TEKNOLOGI MALAYSIA

Chemical Management Unit
University Laboratory Management Centre

